



Damen ärmellose Fleece-Jacke

Fitted

XS → XXL

300 GSM

Description

Sleeveless
 Elastic binding at neck edge, armhole and hem
 Inside back neck grosgrain loop
 Nylon coil zipper with metal puller and cord ending
 Brushed fabric with Anti piling finish on inside and outside
 Front side welt pockets with zip opening
 Inside back neck tape in recycled polyester

Composition

Shell - Polar Fleece
 100% recyceltes Polyester - 300.0 GSM
 Brushed, Anti piling

Care instruction

Wash similar colours together. No ironing. Close all snaps before washing. Line dry.



Herkunftsland

Weaving : China
 Dyeing : China
 Assembly : Bangladesch



Colors



Black
C002



Desert
Dust
C028



Anthracite
C253



Khaki
C223



Mindful
Blue
C729



Stargazer
C702

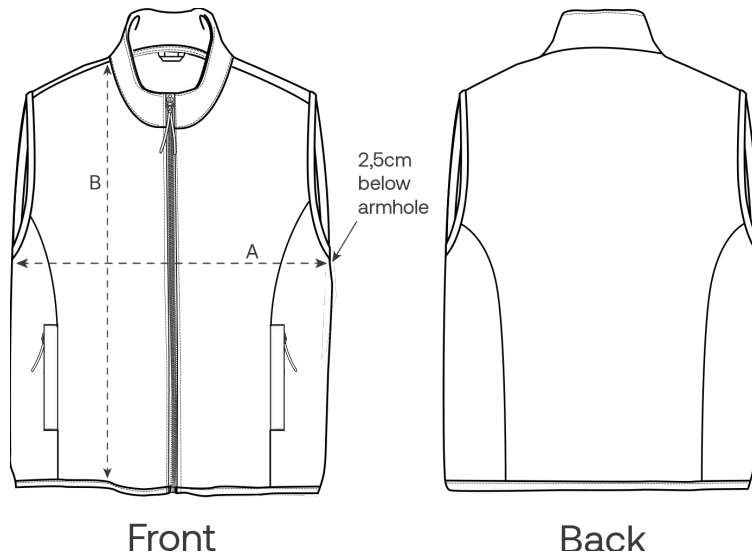


French
Navy
C727



Burgundy
C244

Größenführer



Measurement in cm	XS	S	M	L	XL	XXL
A - Half Chest	45	48	51	54	58	62
B - Body Length	59	62	64	66	68	70

Verpackung

Sizes	XS	S	M	L	XL	XXL
Pieces / bag	5	5	5	5	5	5
Pieces / box	15	15	15	15	15	15